

Flight Scientist Report  
Wednesday 06/07/2022 ACTIVATE RF167

Flight Type: Statistical Survey Flight  
Flight Route: TXKF 3232N/06400W 3430N/05900W 3232N/06400W 3212N/06430W  
3215N/0650W TXKF  
Special Notes:

**King Air**

Pilot report (Wusk):  
Second flight of a two flight flight day. Crew Sandeen, Wusk, Shingler

Flight scientist report (Shingler):

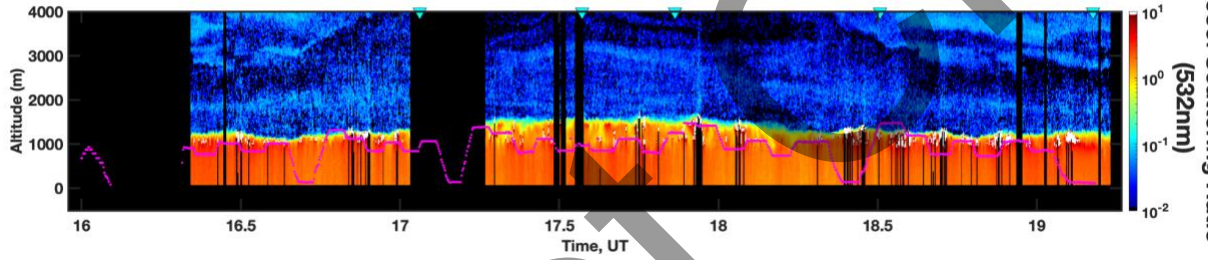
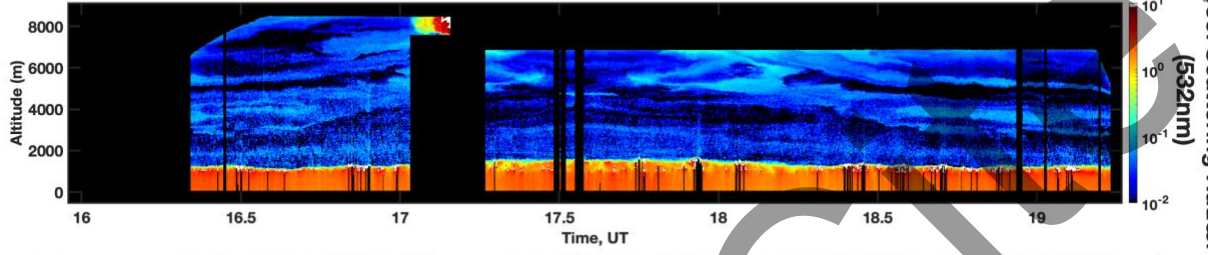
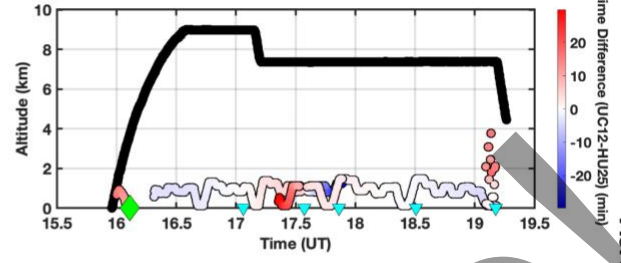
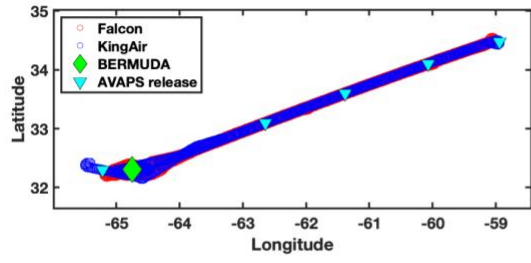
Homogeneous lidar curtain throughout essentially the entire flight. Shallow cu was persistent with CTHs at about 4kft. The FT above was clear and void of most aerosols. There were some cirrus present around 26kft. UC12 descended to stay under the cirrus. Performed an overpass to the BIOS glider location to the east of Bermuda and then an overpass to the Tudor Hill spiral location.

**Falcon**

Pilot report (Baxley):  
ACTIVATE flight with HU-25 and UC-12; Thorson/Baxley, Crosbie/Winstead TXKF  
3232N/06400W 3430N/05900W 3232N/06400W 3212N/06430W 3215N/0650W TXKF - Mission  
flown as planned, weather as briefed. Minor deviations to course at direction of research team  
to capture more data. Conducted ~5 nm spiral at Tudor Hill up to ~12000 MSL. No issues or  
anomalies noted.

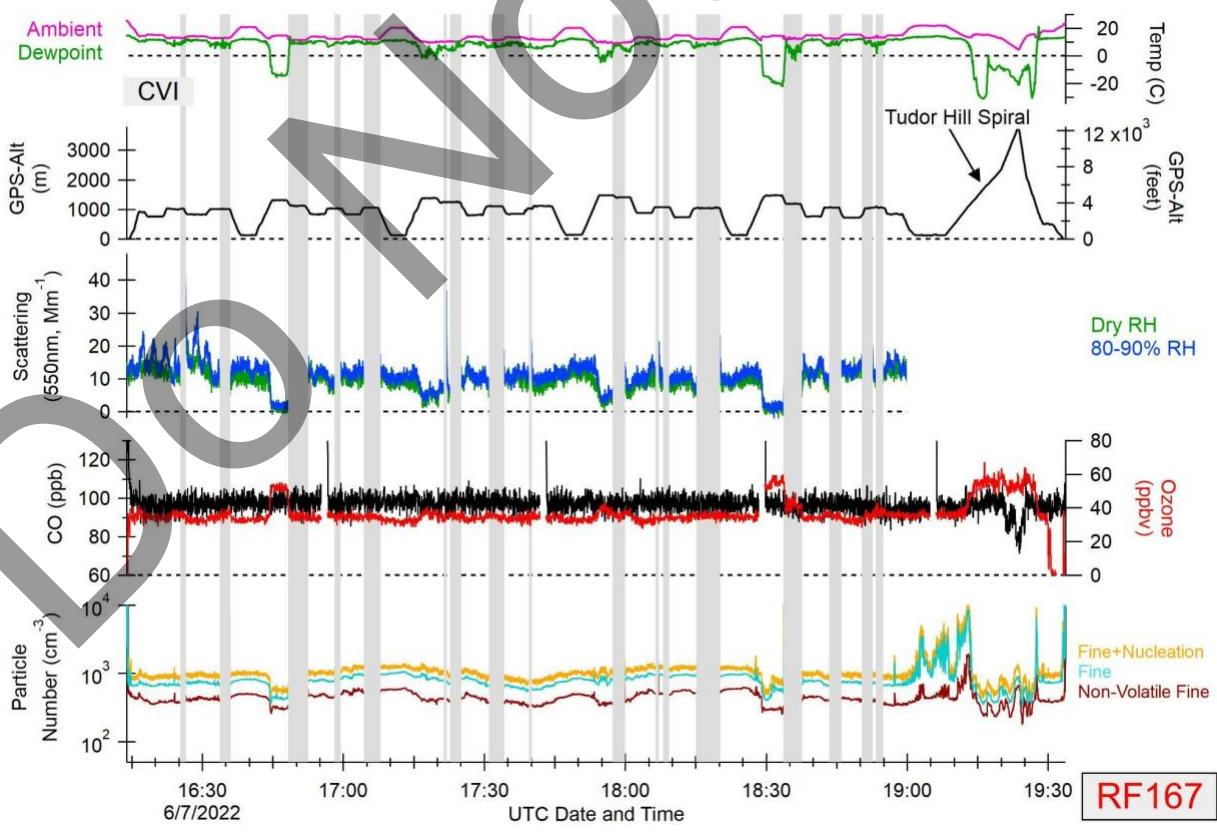
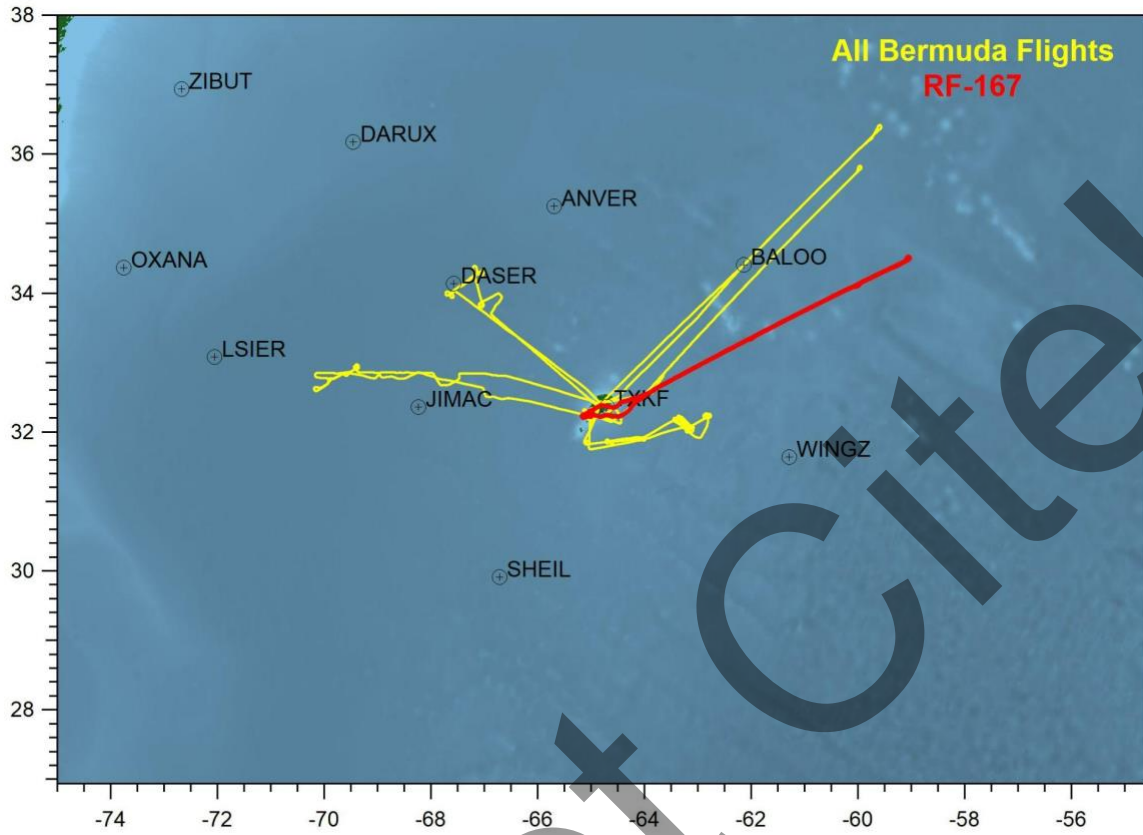
Flight scientist report ():

20220607 - ACTIVATE - KingAir and Falcon flight tracks



Aerosol Scattering Ratio (532nm)

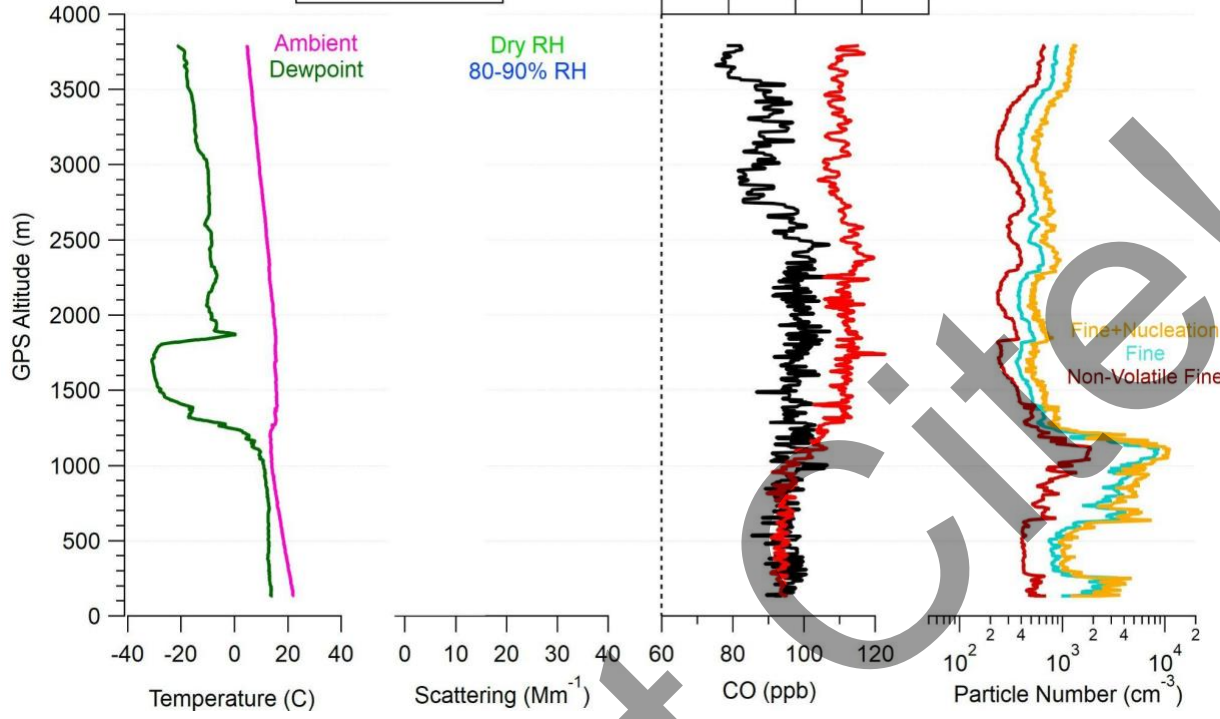
DO NOT



Tudor Hill Spiral

6/7/2022  
19:08 - 19:23 UTC

RF167



Do Not Cite!

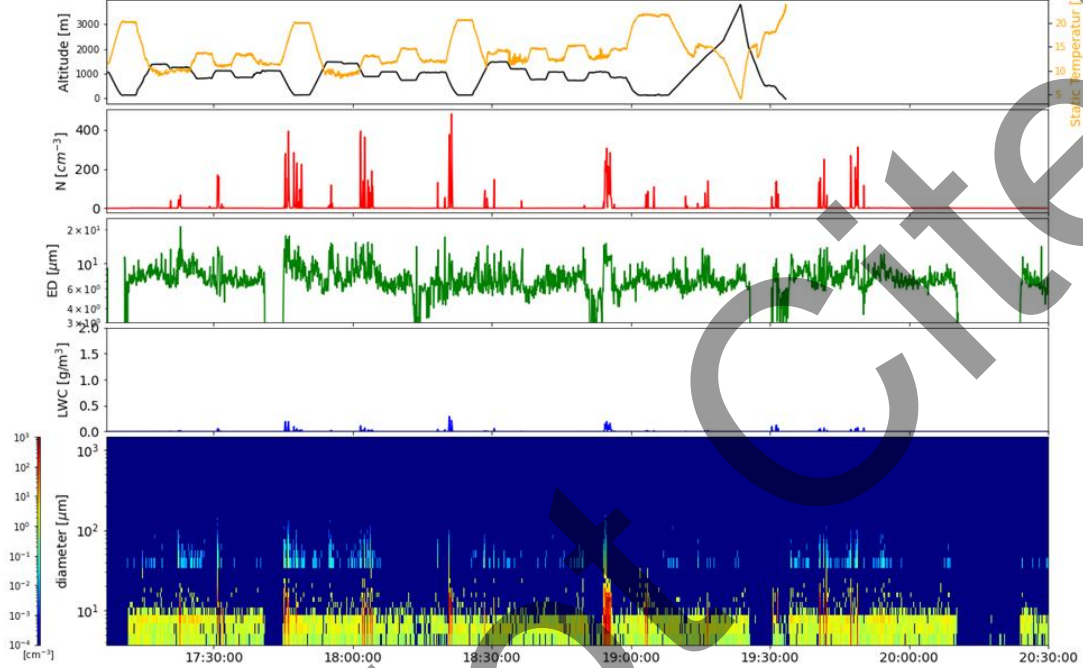
# Quicklook ACTIVATE Cloud Probes (FCDP & 2DS) Quicklook

preliminary data, only for quicklook use

Simon Kirschler, Christiane Voigt, Richard Moore, Ewan Crosbie



Cloud Probes (FCDP & 2DS) Quicklook 07/06/2022 17:06:48-20:30:00



Simon.Kirschler@dlr.de, Christiane.Voigt@dlr.de, richard.h.moore@nasa.gov, ewan.c.crosbie@nasa.gov

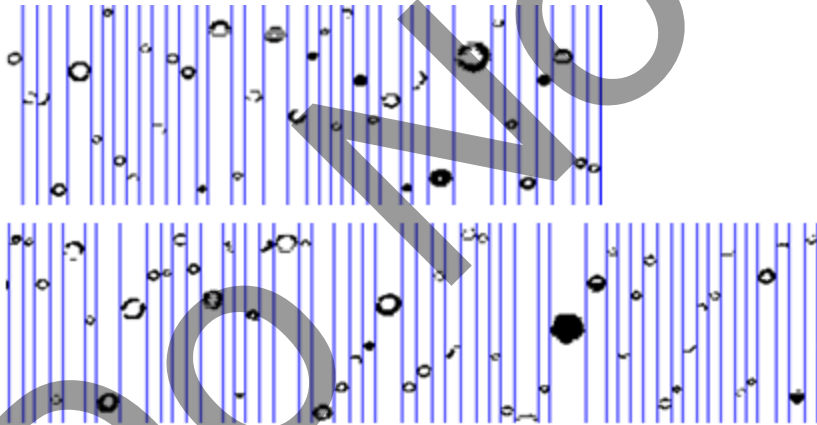
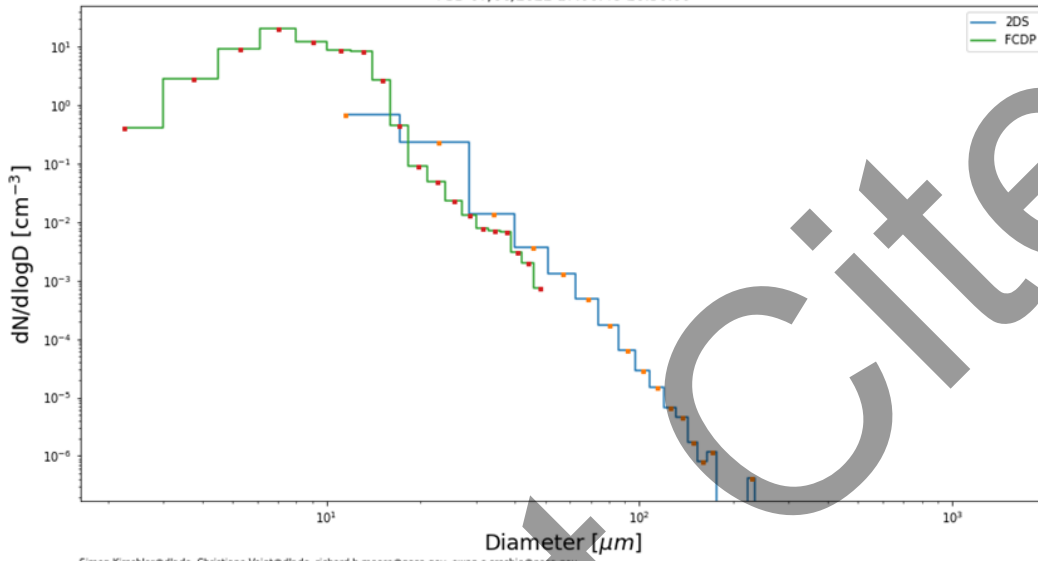
Do Not Cite!

# PSD ACTIVATE

preliminary data, only for quicklook use  
Simon Kirschler, Christiane Voigt, Richard Moore, Ewan Crosbie

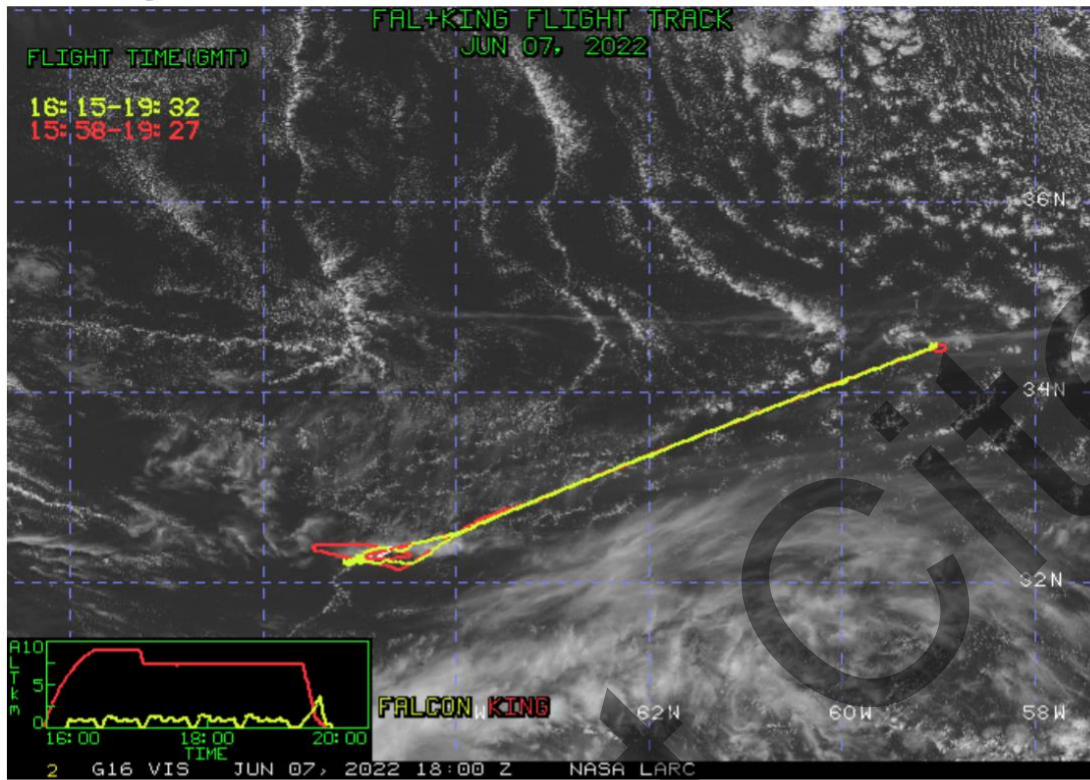


PSD 07/06/2022 17:06:48-20:30:00

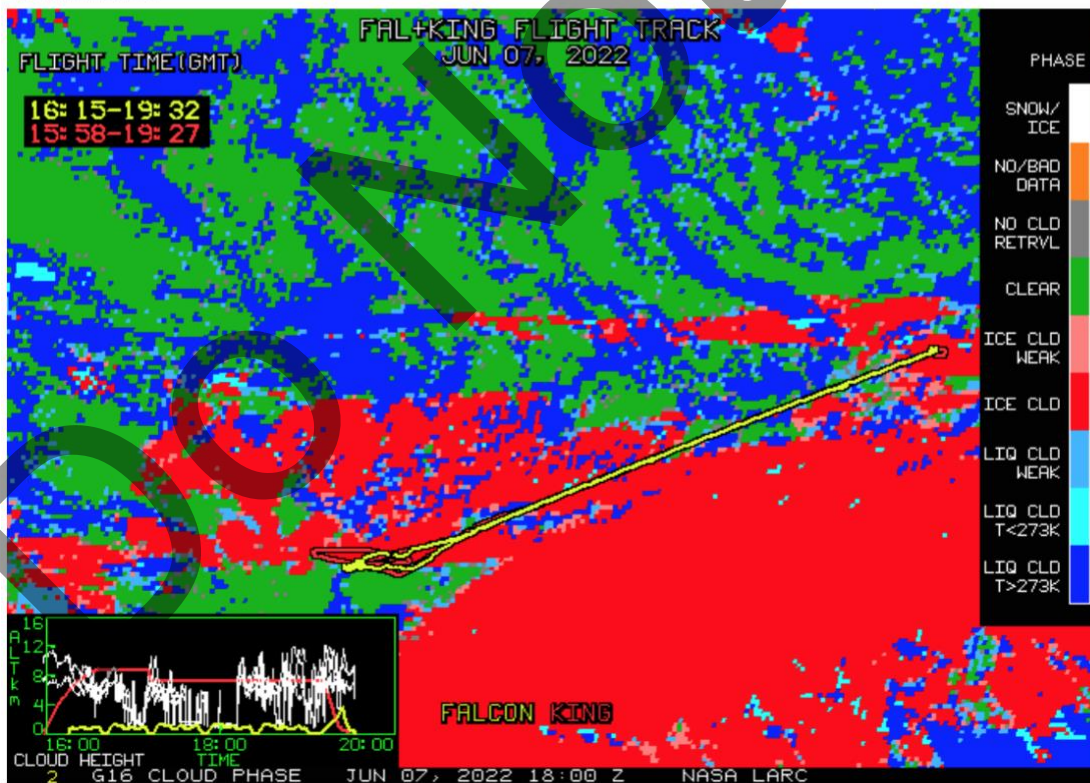


Only pure liquid clouds with Drizzle.

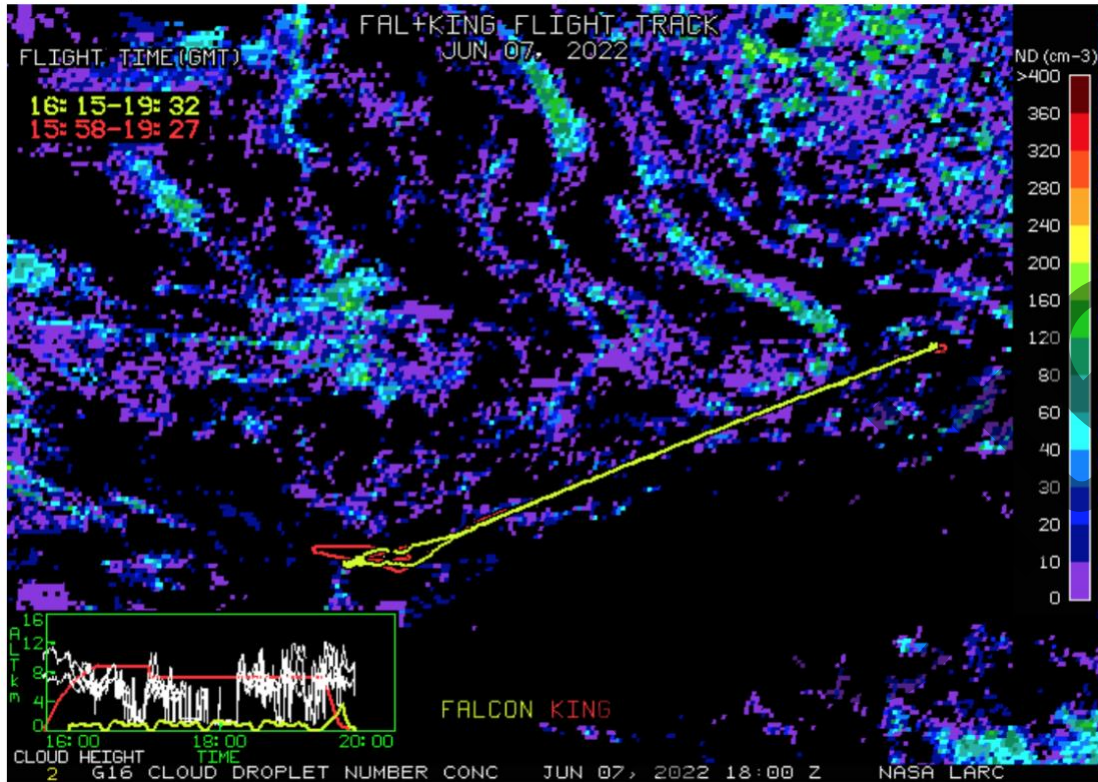
### Visible Image



### Cloud Phase



Cloud Droplet Number Concentration (cm-3)



Cloud-Top Height (Kft-ASL)

