

## C-130 Hercules 09/01/14

**Flight Number:** Transit (1 of 2)  
**Payload Configuration:** ARISE  
**Nav Data Collected:** No  
**Total Flight Time:** 8.7 hours  
**Submitted by:** Cate Easmunt on 09/02/14  
**Flight Segments:**

<b>From:</b>	KWAL	<b>To:</b>	KTCM
<b>Start:</b>	09/01/14 14:15 Z	<b>Finish:</b>	09/01/14 22:57 Z
<b>Flight Time:</b>	8.7 hours		
<b>Log Number:</b>	<a href="#">141002</a>	<b>PI:</b>	Christy Hansen
<b>Funding Source:</b>	Bruce Tagg - NASA - SMD - ESD Airborne Science Program		
<b>Purpose of Flight:</b>	Transit		
<b>Comments:</b>	Science data acquired.		

### Flight Hour Summary:

	141002	151004
<b>Flight Hours Approved in SOFRS</b>	229	
<b>Flight Hours Previously Approved</b>		88.7
<b>Total Used</b>	140.3	18.2
<b>Total Remaining</b>		70.5

### 151004 Flight Reports

Date	Flt #	Purpose of Flight	Duration	Running Total	Hours Remaining	Miles Flown
<a href="#">10/02/14 - 10/03/14</a>	Cal Flight	Science	8.6	8.6	80.1	
<a href="#">10/04/14</a>	Transit	Transit	9.6	18.2	70.5	

**Source URL:** [https://espo.nasa.gov/arise/flight\\_reports/C-130\\_Hercules\\_09\\_01\\_14#comment-0](https://espo.nasa.gov/arise/flight_reports/C-130_Hercules_09_01_14#comment-0)

Page Last Updated: April 22, 2017

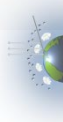
Page Editor: Brad Bulger

NASA Official: Marilyn Vasques

*Flight Reports began being entered into this system as of 2012 flights. If there were flights flown under an earlier log number the flight reports are not available online.*

### 141002 Flight Reports

Date	Flt #	Purpose of Flight	Duration	Running Total	Hours Remaining	Miles Flown
<a href="#">08/24/14</a>	Engineering Check Flight	Check	2.8	2.8	226.2	
<a href="#">08/29/14</a>	Boom Calibration Flight	Check	0.5	3.3	225.7	
<a href="#">08/30/14</a>	Project Check Flight	Check	5.2	8.5	220.5	
<a href="#">09/01/14</a>	Transit (1 of 2)	Transit	8.7	17.2	211.8	
<a href="#">09/02/14</a>	Transit (2 of 2)	Transit	6.6	23.8	205.2	
<a href="#">09/04/14 - 09/05/14</a>	Arctic Ocean - Flight #1	Science	6.6	30.4	198.6	
<a href="#">09/05/14 - 09/06/14</a>	140W Sea Ice - Flight #2	Science	7.1	37.5	191.5	
<a href="#">09/06/14 - 09/07/14</a>	Ice ZigZag-Terra - Flight #3	Science	7.1	44.6	184.4	
<a href="#">09/07/14 - 09/08/14</a>	CERES Gridbox - Flight #4	Science	8.4	53	176	



Distributed by the Atmospheric Science Data Center

<https://asdc.larc.nasa.gov/>



<a href="#">09/09/14 - 09/10/14</a>	CERES Gridbox - Flight #5	Science	7.7	60.7	168.3
<a href="#">09/10/14 - 09/11/14</a>	MIZ Lawnmower - Flight #6	Science	8.8	69.5	159.5
<a href="#">09/11/14 - 09/12/14</a>	CERES Gridbox - Flight #7	Science	7.5	77	152
<a href="#">09/13/14 - 09/14/14</a>	CERES Gridbox - Flight #8	Science	8.3	85.3	143.7
<a href="#">09/15/14 - 09/16/14</a>	CERES Gridbox - Flight #9	Science	8.1	93.4	135.6
<a href="#">09/16/14 - 09/17/14</a>	Radiation Wall Pattern - Flight #10	Science	8.3	101.7	127.3
<a href="#">09/17/14 - 09/18/14</a>	CERES Gridbox - Flight #11	Science	7.2	108.9	120.1
<a href="#">09/18/14 - 09/19/14</a>	Sea Ice Albedo/CryoSat - Flight #12	Science	8.6	117.5	111.5
<a href="#">09/19/14 - 09/20/14</a>	Radiation Wall Pattern - Flight #13	Science	8.3	125.8	103.2
<a href="#">09/21/14 - 09/22/14</a>	Sea Ice & Radiation - Flight #14	Science	8.2	134	95
<a href="#">09/24/14 - 09/25/14</a>	Gridbox TOA+Surface - Flight #15	Science	6.3	140.3	88.7

