

## C-130 Hercules 09/05/14 - 09/06/14

**Flight Number:** 140W Sea Ice - Flight #2  
**Payload Configuration:** ARISE  
**Nav Data Collected:** No  
**Total Flight Time:** 7.1 hours  
**Submitted by:** Cate Easmunt on 09/06/14  
**Flight Segments:**

<b>From:</b>	PAEI	<b>To:</b>	PAEI
<b>Start:</b>	09/05/14 20:15 Z	<b>Finish:</b>	09/06/14 03:20 Z
<b>Flight Time:</b>	7.1 hours		
<b>Log Number:</b>	<a href="#">141002</a>	<b>PI:</b>	Christy Hansen
<b>Funding Source:</b>	Bruce Tagg - NASA - SMD - ESD Airborne Science Program		
<b>Purpose of Flight:</b>	Science		

### Flight Hour Summary:

	141002	151004
<b>Flight Hours Approved in SOFRS</b>	229	
<b>Flight Hours Previously Approved</b>		88.7
<b>Total Used</b>	140.3	18.2
<b>Total Remaining</b>		70.5

### 151004 Flight Reports

Date	Flt #	Purpose of Flight	Duration	Running Total	Hours Remaining	Miles Flown
<a href="#">10/02/14 - 10/03/14</a>	Cal Flight	Science	8.6	8.6	80.1	
<a href="#">10/04/14</a>	Transit	Transit	9.6	18.2	70.5	

**Source URL:** [https://espo.nasa.gov/arise/flight\\_reports/C-130\\_Hercules\\_09\\_05\\_14\\_-\\_09\\_06\\_14#comment-0](https://espo.nasa.gov/arise/flight_reports/C-130_Hercules_09_05_14_-_09_06_14#comment-0)

Page Last Updated: April 22, 2017

Page Editor: Brad Bulger

NASA Official: Marilyn Vasques

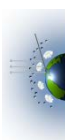
### Related Science Report:

## ARISE - C-130 Hercules 09/05/14 Science Report

**Mission:** ARISE  
**Mission Summary:**

140W Sea Ice Flight - Flight#2

A ridge of high pressure splitting two lows to either side opened a generally clear view of sea-ice today along the 140N line. The models and the trends in satellite imagery predicted this well, and overall the weather revealed the same. We took advantage of the opportunity and captured one of the Operation IceBridge Sea-ice team's highest priority flights – a long transect northbound across the sea-ice at 140W to 80.5N. This 140W line was sampled by the Seasonal Ice Zone Reconnaissance Survey (SIZRS) in July, and will be revisited by them in late September. Coordinated work with this group will help further understand sea ice dynamics. There was a large area of low-level stratus along the beginning of the line, but otherwise it was mostly clear below the aircraft, with

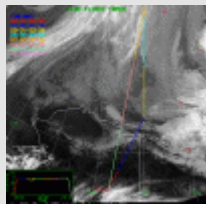


note that some links and images will not load.

some occasional haze near the C-130 altitude (~24 kft). Good data were also obtained from LVIS along the direct transit back to Fairbanks until reaching about 74N. A series of pitch and roll were also performed for LVIS over the sea just north of the Alaska coast and the flight ended with an overpass of the ramp at Eielson at 6000 ft for LVIS GPS calibration.

**Images:**

**September 5, 2014 Figure 1**



[Read more](#)

**September 5, 2014 Figure 2**



[Read more](#)

**September 5, 2014 Figure 3**



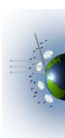
[Read more](#)

**Submitted by:** William L. Smith Jr. on 09/06/14

*Flight Reports began being entered into this system as of 2012 flights. If there were flights flown under an earlier log number the flight reports are not available online.*

**141002 Flight Reports**

Date	Flt #	Purpose of Flight	Duration	Running Total	Hours Remaining	Miles Flown
<a href="#">08/24/14</a>	Engineering Check Flight	Check	2.8	2.8	226.2	
<a href="#">08/29/14</a>	Boom Calibration Flight	Check	0.5	3.3	225.7	
<a href="#">08/30/14</a>	Project Check Flight	Check	5.2	8.5	220.5	
<a href="#">09/01/14</a>	Transit (1 of 2)	Transit	8.7	17.2	211.8	
<a href="#">09/02/14</a>	Transit (2 of 2)	Transit	6.6	23.8	205.2	
<a href="#">09/04/14 - 09/05/14</a>	Arctic Ocean - Flight #1	Science	6.6	30.4	198.6	
<a href="#">09/05/14 - 09/06/14</a>	140W Sea Ice - Flight #2	Science	7.1	37.5	191.5	
<a href="#">09/06/14 - 09/07/14</a>	Ice ZigZag-Terra - Flight #3	Science	7.1	44.6	184.4	
<a href="#">09/07/14 - 09/08/14</a>	CERES Gridbox - Flight #4	Science	8.4	53	176	



note that some links and images will not load.

<a href="#">09/09/14 - 09/10/14</a>	CERES Gridbox - Flight #5	Science	7.7	60.7	168.3
<a href="#">09/10/14 - 09/11/14</a>	MIZ Lawnmower - Flight #6	Science	8.8	69.5	159.5
<a href="#">09/11/14 - 09/12/14</a>	CERES Gridbox - Flight #7	Science	7.5	77	152
<a href="#">09/13/14 - 09/14/14</a>	CERES Gridbox - Flight #8	Science	8.3	85.3	143.7
<a href="#">09/15/14 - 09/16/14</a>	CERES Gridbox - Flight #9	Science	8.1	93.4	135.6
<a href="#">09/16/14 - 09/17/14</a>	Radiation Wall Pattern - Flight #10	Science	8.3	101.7	127.3
<a href="#">09/17/14 - 09/18/14</a>	CERES Gridbox - Flight #11	Science	7.2	108.9	120.1
<a href="#">09/18/14 - 09/19/14</a>	Sea Ice Albedo/CryoSat - Flight #12	Science	8.6	117.5	111.5
<a href="#">09/19/14 - 09/20/14</a>	Radiation Wall Pattern - Flight #13	Science	8.3	125.8	103.2
<a href="#">09/21/14 - 09/22/14</a>	Sea Ice & Radiation - Flight #14	Science	8.2	134	95
<a href="#">09/24/14 - 09/25/14</a>	Gridbox TOA+Surface - Flight #15	Science	6.3	140.3	88.7

