

GCAS observations
(cloud filter not applied)

Top row: NO₂ column densities (linear scale)

Middle row: NO₂ column densities (log scale)

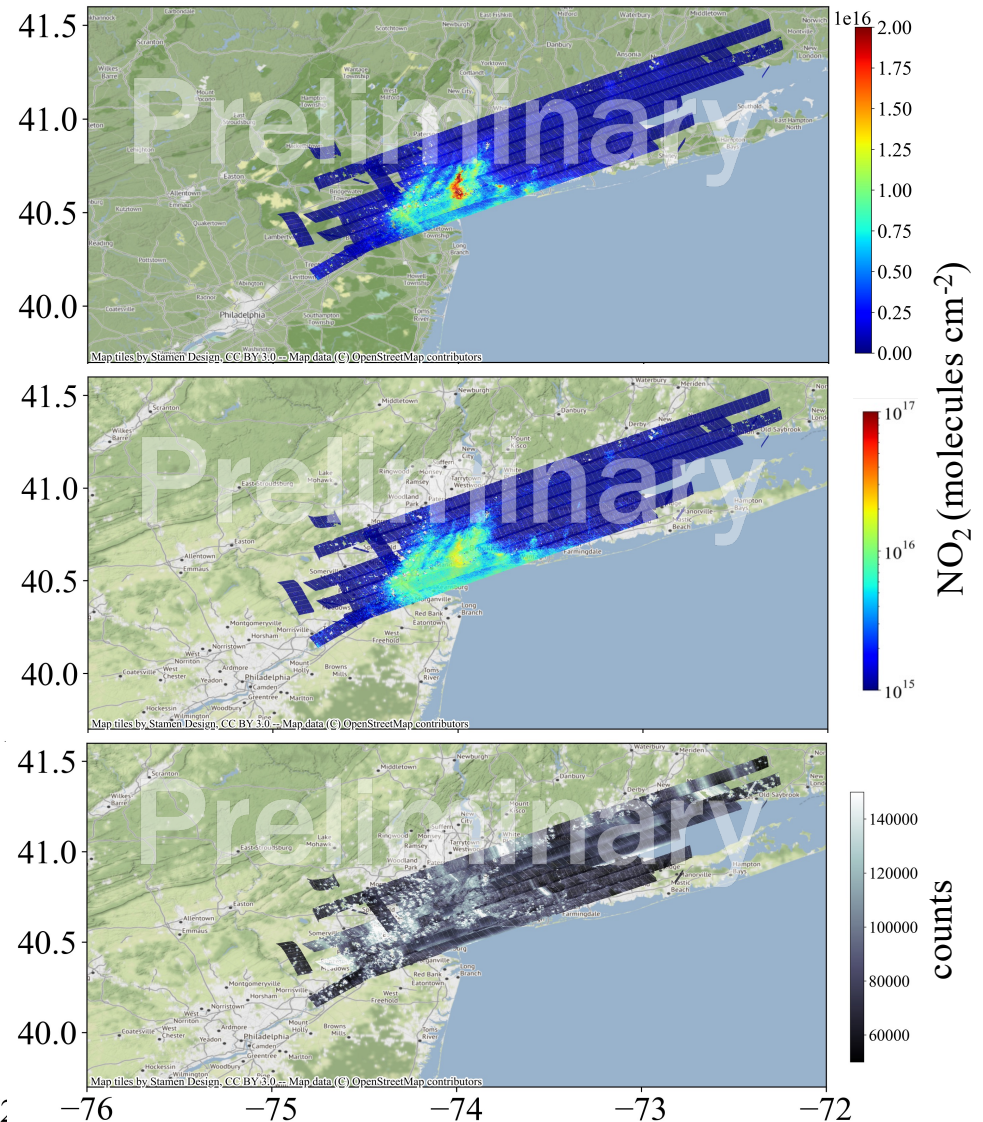
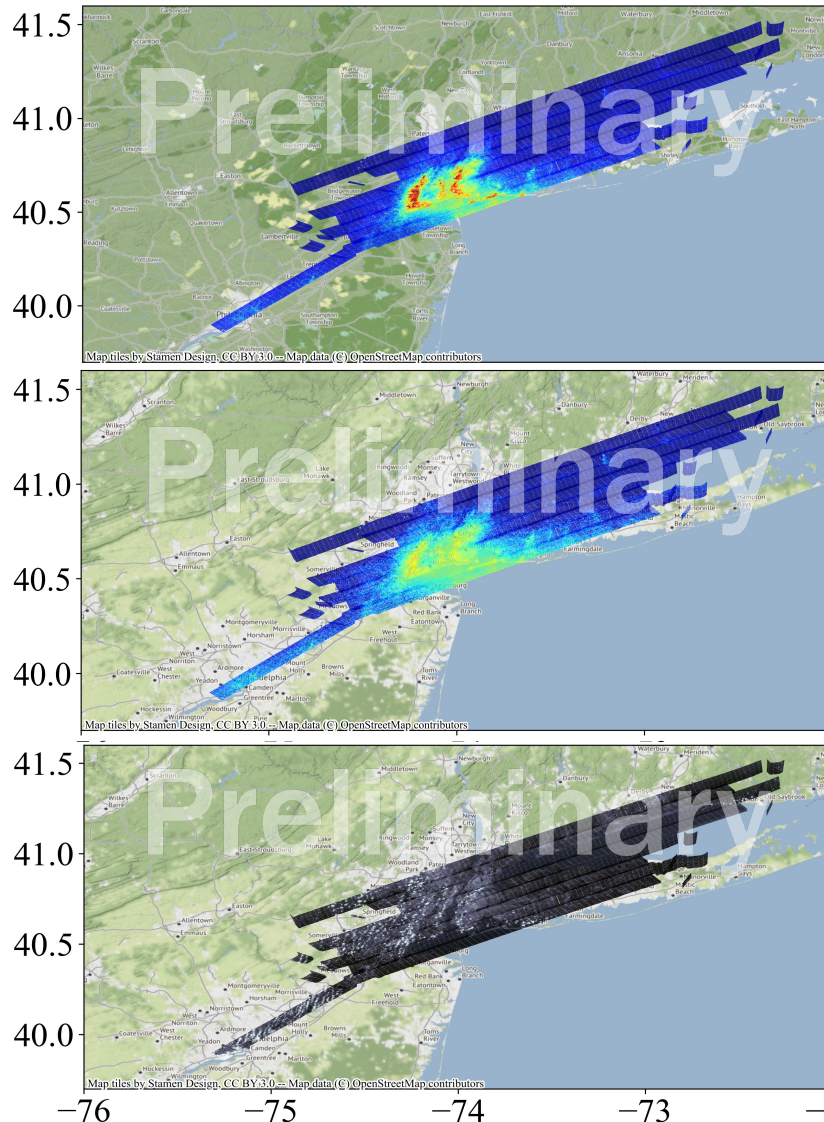
Bottom row: count rate in the NO₂ spectral window on detector
(indication for bright surfaces and clouds)

20230805 Saturday

NEW YORK CITY, NY; NEWARK, NJ; PHILADELPHIA, PA

R1: 13:15:37 - 15:46:29 UTC

R2: 15:47:38 - 18:26:22 UTC



Notes:

R3 was cut due to cirrus clouds entering from West

STAQS PI: laura.m.judd@nasa.gov

Quicklook: mary.a.demetillo@nasa.gov

GCAS PI: scott.j.janz@nasa.gov

Daily AQI monitor readings from AirNow.gov:

O₃ AQI: Good (0 – 50) in North of Manhattan and central Long Island Sound, Moderate (51 – 100) in south NYC and eastern Long Island Sound

PM2.5 AQI: Moderate (51 – 100) except Good (0 – 50) at Holtsville in east Long Island Sound and Port Richmond